

# NewtCase 3.0

Written by Dan Rowley  
Documentation by Tom Collins

©1994-5 Innovative Computer Solutions  
All Rights Reserved

**NewtCase 3.0**  
**©1994-5 Innovative Computer Solutions**  
**All Rights Reserved**

**Manual Revision 12/7/95**

**Registration Number \_\_\_\_\_**

NewtCase, SleepAid, NewtInfo, GestureLaunch, GestureScript,  
SoupKitchen, QuickPicker and "Izzy" the ICS newt are trademarks of  
Innovative Computer Solutions.  
Apple, the Apple Logo and Newton are trademarks of Apple Computer  
Inc., registered in the United States and other countries.  
MessagePad is a trademark of Apple Computer Inc.  
No newts were harmed while making this product.

# WARNING

Please read this documentation entirely.

NewtCase makes use of undocumented system calls and may not work with future versions of the Newton operating system.

## Contents

Introduction to Freezing and Thawing.....	1
Information for Users of NewtCase 2.x.....	2
Desktop, a replacement backdrop.....	3
NewtCase Package Manager.....	6
NewtCase Extensions Manager.....	13
QuickPicker, a package launcher.....	16
GestureLaunch, a button bar.....	17
NewtInfo, a System Profiler.....	21
SleepAid, a Power Manager.....	26
SoupKitchen, a soup editor.....	31
Contact Information/Technical Support.....	34
Legal Mumbo Jumbo.....	36



# Freezing and Thawing

---

A key component of NewtCase is the ability to freeze and thaw packages. This feature is a part of the Newton OS that must be enabled through a program like NewtCase.

For users of previous versions of NewtCase, freezing is similar to the archives in v1.x and quick archives in v2.x.

For those of you who are new to NewtCase, here's an overview of freezing and why it's important.

Freezing a package is the same as taking it off-line or disabling it. When it's frozen, any features it adds to the Newton (e.g., Find, Assist, Printing) are not available. The two main benefits of freezing packages are that they no longer use any heap space, and they can't conflict with other software on your Newton.

Without NewtCase, frozen packages had to be thawed (re-activated) before you could use them. With NewtCase installed though, you can use frozen packages as if they were active. Tap on a frozen package in the Extras Drawer or the QuickPicker, and NewtCase will thaw it, launch it, and then re-freeze it when you're done.

So, if you have packages that you rarely use, packages that use a lot of heap, or packages that conflict with each other, you should consider freezing them.

# Information for NewtCase 2.x Users

“NewtCase” now refers to our entire utility suite. The package formerly known as NewtCase has been split into a Package Manager and Extensions Manager.

NewtCase 3.0 does not support the archives from NewtCase 2.x (they are incompatible with the new Newton OS).

Frozen packages are similar to Quick Archives with the following exceptions:

- They appear in the Extras Drawer and you can access them without the Package Manager.
- They can be backed up.

The SleepAidNow and HeapStats buttons in SleepAid have been moved. They are now above the silk-screened buttons.

We recommend that you read the sections on Desktop, Package Manager and Extensions Manager as they are new to this version of NewtCase.

# Desktop

---

## Overview

The NewtCase Desktop is a replacement for using the Notepad as a backdrop. You can still load the Notepad while running Desktop, but you'll also be able to quit it in order to free up heap space. Desktop covers the screen with a user selectable pattern, provides a popup menu for launching packages and supports most packages that add buttons to the Notepad's status bar.

## Installation Notes

You **MUST** install Desktop on the Internal store. You cannot place it on your storage card. Once installed, go into the Extras Drawer, select Desktop, and choose "Make backdrop" from the Action menu. If you use programs that add buttons to the Notepad, you should restart your Newton so the buttons will show up in Desktop.

**PLEASE NOTE:** Do not try to remove, freeze, or move Desktop while it's the backdrop application.

## Instructions

Desktop has a set of buttons that appear at the bottom of the screen or in a floating button strip. The buttons perform the following actions:



The Info button presents a list of desktop patterns. Click on one to start using it. You can also configure the QuickPicker to sort its package list or display packages in “Extras Drawer order”.



The Launch button presents the NewtCase QuickPicker with a list of installed and frozen packages. Tap on a package to launch it or tap outside of the menu to dismiss it. See the QuickPicker section for more information on using this feature.



The Tear button creates a floating version of the button strip.



The Rotate button switches the Newton between portrait and landscape mode.

In addition, the floating strip contains these two buttons:



The “zipper” for the strip. You can drag the strip around on the screen by its zipper. Tapping on this icon slides the strip off the screen to the right, or brings it back onto the screen.



**WARNING:** When using Desktop in landscape mode, the strip will cover the silk-screened buttons (Names, Dates, arrows, etc.) when dragged off-screen.



The close box removes the floating strip.

Buttons from other compatible packages will appear to the left of the Launch/Tearoff buttons.

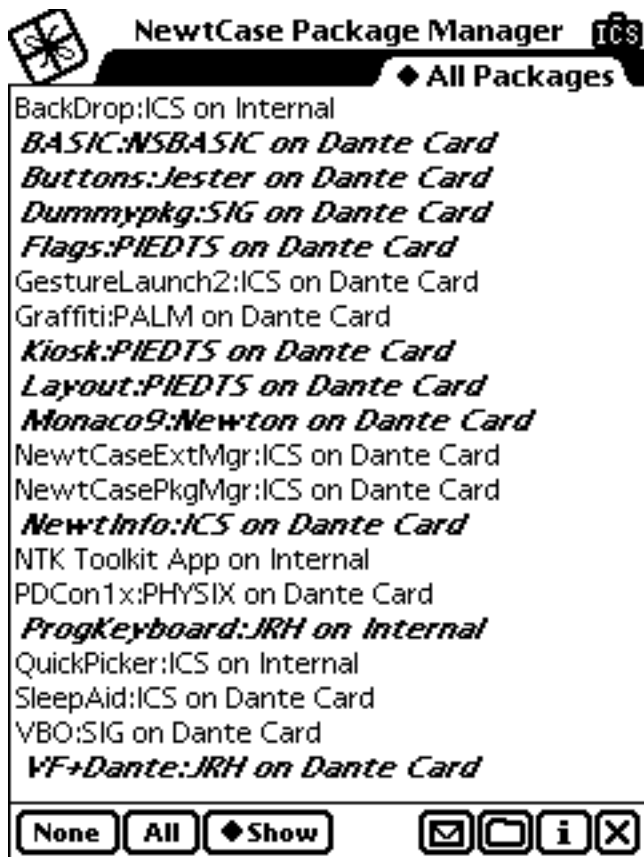
## Technical Information

Desktop will support buttons that conform to the Button Developers Kit created by Jesse Devine and the Button Developers Consortium (BELLY). Many packages designed for 1.x Newton OS use the BELLY standard which doesn't work with the Notepad with the 2.x Newton OS. Desktop (when used as your backdrop package) is compatible with many (though not all) of these packages. If the package relies on a particular feature of the 1.x Newton OS, it may appear on the strip, but will not work correctly when tapped on.

Desktop also supports AuxButtons, the new OS 2.0 specific standard for placing buttons on the backdrop application.

The strip goes off the right side of the screen because the Newton OS does not allow views off the left side of the screen.

# NewtCase Package Manager



## Overview

In addition to adding new features to the Extras Drawer, the Package Manager provides an alternate interface for managing your packages. When installed, your Extras Drawer lets you freeze and thaw packages in groups and launch frozen packages. With the Package Manager installed, you can display more packages, select groups of packages easier, and show detailed information on every package in the Extras Drawer.

## Installation

You should install the Package Manager on your Internal store.

## Extras Drawer Enhancements

When the Package Manager is installed, it affects the behavior of the Extras Drawer.

- Enables the freeze/thaw feature of the Newton OS (see Freezing section for more information).
- Frozen packages will appear grayed out with a mini-snowflake instead of being replaced by a snowflake.
- The Extras Drawer will launch frozen packages instead of thawing them when tapped.
- You can freeze or thaw a group of packages by selecting them and choosing “Freeze/Thaw” from the routing menu.

- Note that when freezing a group of packages it may take some time for the icons to change in the Extras Drawer.
- Frozen packages now remember their folder setting when thawed.

## Instructions

When you first launch the Package Manager, it will display all packages on all stores. Frozen packages will appear in a bold italic typeface

Scroll the list with the arrows at the bottom of the screen. Select and deselect packages by tapping on them. You can select a range of packages by tapping and dragging from the first package to the last package in the range. Even though the packages may not immediately highlight, the Package Manager remembers what you have selected and will highlight the packages as processing time allows. You can also use the **None** and **All** buttons to clear the selection or select all packages in the current list.

## Restricting the package list



Use the folder tab at the top of the list to show packages in a particular set or on a particular store.


Use the **Show** button to limit the list based on whether a package is frozen or active.

## Routing


All routing options are performed on the currently selected package(s).

**PLEASE NOTE:** This can include packages in the list that have scrolled off the screen. This differs from the Extras Drawer which clears the selection when you scroll to a new page.

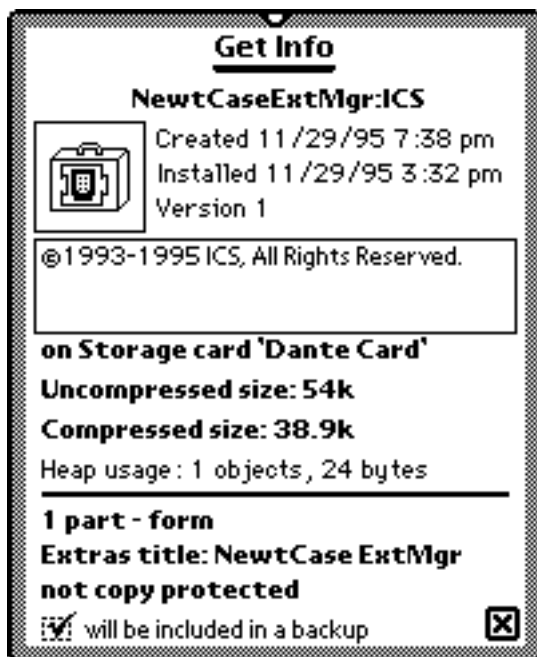
The top half of the Routing menu lists available transports for your package. The MessagePad has two built-in transports,  **Beam Packages** and  **Mail**. If you have any additional transports installed that support packages, they will appear in the list with Beam and Mail. Tapping on a routing option will transport the selected packages.

 **Freeze** allows you to deinstall a package without removing it from your MessagePad.

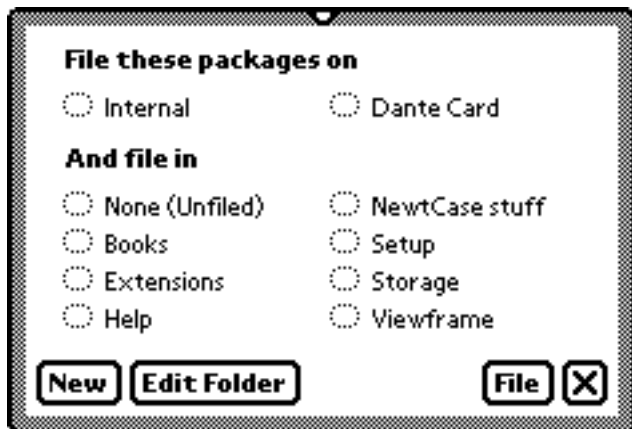
 **Thaw** is the opposite of Freeze. It will take a frozen package and reinstall it.

 **Delete** will permanently remove the package from your Newton.

**Get Info** provides detailed information on the currently selected package or, if a group of packages are selected, summary information for the group. When getting info on a single package, you can set or clear the backup flag that determines whether or not a package is backed up. A check mark in the box indicates that the package is included in backups. If you're missing packages in your backups, verify that this flag has been set.



## Filing



All filing options are performed on the currently selected package(s).

The filing slip lets you set the current folder for the selected packages. In addition, you can create a new folder, or edit the current folder. You can also use the filing slip to move a package to another store.

## Information/Help

**About** displays information about NewtCase Package Manager (NCPM).

**Show/hide package sizes** allows you to display package sizes in the package list. This will slow the list down a little.

**Use small/large list font** allows you to choose the font size for the package list.

**Install package to <storename>** temporarily changes the default store to the one you selected and launches the Connect package to download a package from your computer.

## Technical Information

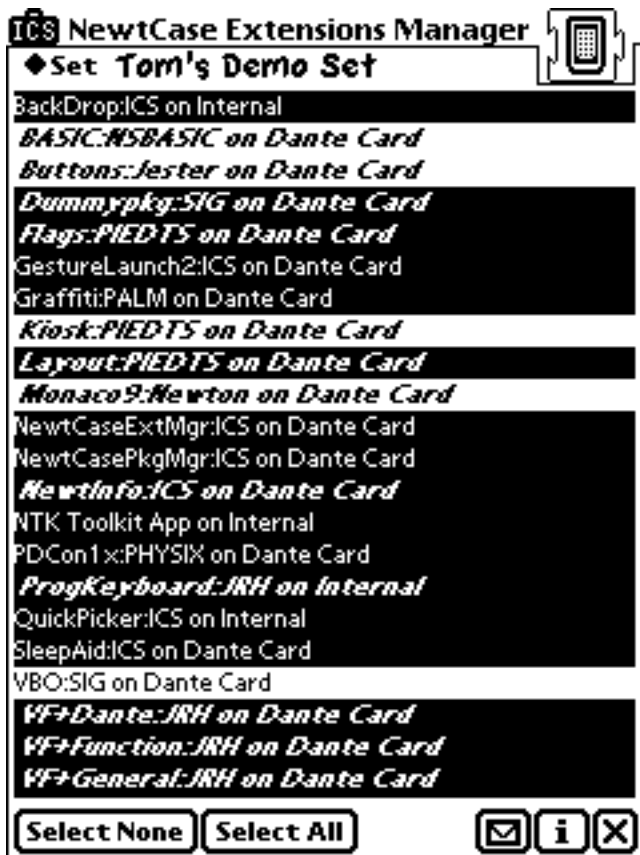
See the introduction to freezing and thawing at the beginning of the manual.

If you remove Package Manager, you will lose the enhancements it makes to the Extras Drawer.

Without Package Manager, the Newton OS will put a thawed package in its original folder, even if you change its location while frozen.



# NewtCase Extensions Manager



## Overview

The Extensions Manager allows you to easily freeze (deactivate) and thaw groups of packages.

## Installation

You should install the Extensions Manager on your Internal store. You need to have the package installed to use the set icons it creates in the Extras Drawer.


## Instructions


The Extensions Manager lists all packages installed on your MessagePad. Frozen packages appear in bold italics. The packages that make up the current set are highlighted. When you exit the Extensions Manager, it will freeze all non-highlighted packages and thaw all highlighted packages.


There is one standard set of “All” that includes all packages. When you choose “new set” or make changes to the “All” set, the Extensions Manager will create a new set called “Untitled”. Any changes you make to a set are saved when you change sets or exit the program. NCEM will not freeze or thaw your packages until you quit.


When you quit the Extensions Manager, it will ask you if you want to activate the current set. If you tap “OK”, NCEM will freeze and thaw packages as necessary to get your MessagePad to match the last selected set.


## Routing

 **Rename Set** will let you change the name of the current set.

 **Delete Set** deletes the set (but doesn't affect the packages in the set).

 **Duplicate Set** makes a copy of the set.

 **Select active pkgs** creates a set that matches the current active package configuration.

 **Make extras icon for set** will create an icon in the extras drawer that can be used to quickly switch to a set. The icon is a link to the set name, so it will match any changes you make to the set.

## Information/Help


**About** displays information about NewtCase Extensions Manager (NCEM).

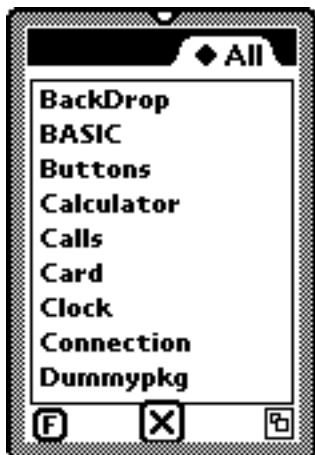
**Use small/large list font** allows you to choose the font size for the package list.

**Install package to <storename>** temporarily changes the default store to the one you selected and launches the Connect package to download a package from your computer.

# QuickPicker

---

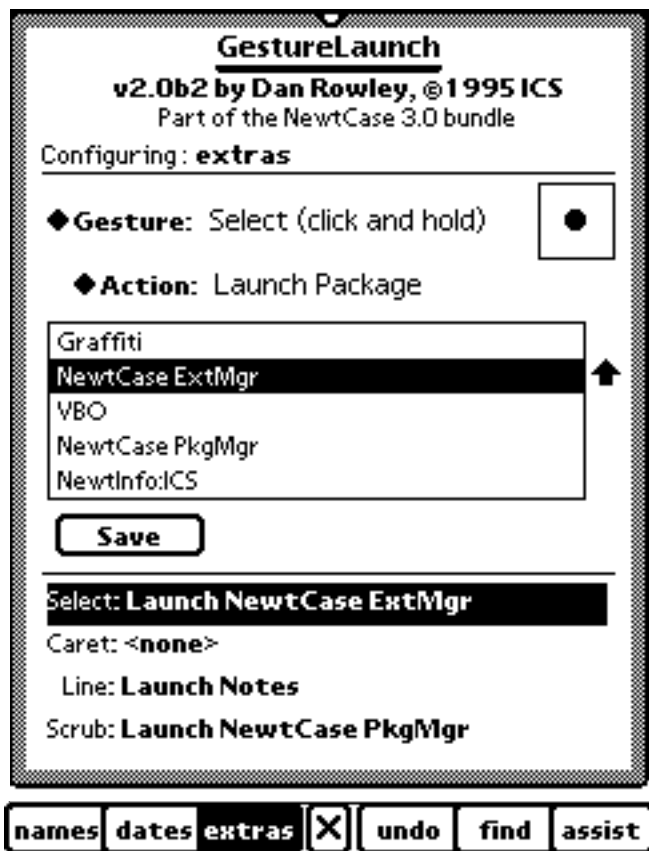
NewtCase includes a QuickPicker that is launched by tapping on the word “Extras” in the Extras Drawer button at the bottom of the screen. If you are running Desktop, you can launch the QuickPicker by tapping on the  button.



The QuickPicker will display a list of active and frozen packages in a selected set. Tap on any package to launch it.

You can use the folder tab at the top of the list to change sets. Tap on the “F” button to switch between a bold or normal font. The big “X” in the center closes the QuickPicker and the box in the lower-right allows you to resize it.

# GestureLaunch



## Overview

Unlike traditional button bars and package launcher, you can assign up to four actions to each built-in button for a total of 24 different actions without any screen space. You can launch any package with a simple gesture (select, caret, line, or scrub) or even execute small NewtonScript programs entered with GestureScript.

## Installation

This program is made up of three separate packages. GestureLaunch is the extension that takes the gestures and performs your configured actions. You configure GestureLaunch by selecting (tapping and holding) the overview button on the bottom of the screen.

The Scripts package is a dispatch only extension (which means that it automatically deletes itself after you install it) that installs sample scripts for use with GestureLaunch and GestureScript.

The GestureScript package is an optional program for advanced users who want to write their own NewtonScript programs for use with GestureLaunch.

## Using GestureLaunch

Before using GestureLaunch, you need to understand the four gestures it uses. The first, select, refers to holding the pen in one spot for a second. The caret is drawn like the roof of a house, from the starting point, up and to the right then down and to the right. The line is a simple horizontal line from left to right. The final gesture, scrub, is drawn as a series of up and down strokes like an M or W.



You can configure GestureLaunch by selecting the overview button (tap and hold on the dot between the arrows at the bottom of the screen). After holding the pen down for a second, release it and the first GestureLaunch menu will appear.

**PLEASE NOTE:** The GestureLaunch configuration screen is only available while in portrait mode. If you attempt to configure it in landscape mode, you will be prompted to switch back to portrait mode.

From the first menu, you can select the button you wish to configure. Once you select a button, the configuration screen for that button appears. For each button, you can assign an action for the four gestures (select, caret, line, and scrub). Select a gesture by selecting it from the menu at the top, or tapping on its name at the bottom of the configuration screen.

This version of GestureLaunch supports two actions: Launch a Package and Execute a GestureScript. After selecting an action, you need to choose a package or GestureScript for that action. Once you have configured a gesture, you need to tap on the Save button to save your changes.

Once you have configured GestureLaunch, tap on the close box of the first menu to exit the configuration screens. Now you can perform a gesture on one of the buttons to have GestureLaunch perform the associated action.

## Using GestureScript

GestureLaunch includes a package of sample scripts. You only need to install GestureScript if you want to change those scripts or write your own. If you want to modify the sample scripts, please modify a copy instead of the original. Future releases of Script packages may replace the sample scripts with updated versions. You can delete all of GestureScript's scripts by selecting "Delete All Scripts" from the Info button.

The GestureScript interface is very straightforward. When you edit a script, be sure to tap the "check" button to verify that it compiles correctly.

## Technical Notes

If you have questions about GestureScript or wish to distribute a package of scripts, please contact [dan@newts.com](mailto:dan@newts.com). If you want us to include some of your scripts in a future release, e-mail them to [gscripts@newts.com](mailto:gscripts@newts.com).



# NewtonInfo

---

## NewtonInfo

v1.2c

by Dan Rowley

©1994-5 Innovative Computer Solutions

- ☐ List General Newton Statistics
- ☐ Calculate Soup Stats
- ☐ More soup details
- ☐ List Packages
- ☐ Detailed Heap Stats (very slow)
- ☐ List Add-on Prefs and Formulas
- ☐ List System Notifications
- ☐ List Idlers
- ☐ List Find-enabled Applications
- ☐ List Intelligent Assistant info

Check desired info and press Start ->

**Start!**



## Overview

NewtInfo is a system profiler for the Newton MessagePad. It can display, print, fax or e-mail a detailed report of soups, packages, memory usage, add-on prefs and formulas, system notifications, idlers, find-enabled packages, and intelligent assistance packages. Users can find out what's taking up so much space on their systems, what some hot new program patches, or why software is suddenly running slower. Developers can have customers use it when calling in with technical support questions.

## Installation Notes

NewtInfo will work if installed internally or on a memory card. Do not attempt to remove the card while NewtInfo is running. NewtInfo must be available while printing, but does not have to be running.

## Instructions

When you launch NewtInfo, you are presented with a list of reports to run. Select the reports to generate, and tap on the Start button. NewtInfo will then build the reports. Once complete, the reports will appear on a roll similar to the Prefs and Formulas rolls. You can tap on the up and down arrows to scroll from one report to another, or tap on the overview button to bring up a list of reports. Tap on a title in the list to go to that report.

Generating the reports requires that you have enough free heap memory. Generating all of the reports on an average Newton

(MP120 with 2 meg card) requires at least 20k of heap. We recommend that you only run a few reports at a time.

PLEASE NOTE: The “Detailed Heap Stats” report is very slow – it can take as long as five minutes to generate.

While viewing the report, you can click on the routing button (envelope icon) to print, fax or NewtonMail the report. Note that NewtInfo must be present when you print or fax the report from your OutBox (e.g., you cannot remove a card with NewtInfo to put in your PCMCIA FaxModem to fax). Also note that routing a NewtInfo report will require additional heap space. You may want to quit NewtInfo before sending the report from your OutBox.

### [ List General Newton Statistics ]

Provides info about the version of NewtInfo, the type of MessagePad (Classic, 100, 110, 120), ROM version, and information about stores (number, names, locked/unlocked, size, space used, space available).

### [ Calculate Soup Stats ]

Provides names of all soups on both stores with the number of non-index entries, and total memory used (including indexes). Soups listed as <none> do not have any entries or indices on that store. Because of indices, it is possible to have a soup with zero entries that still takes up space. Also, because of rounding, it is possible for entries to “not add up” (e.g., if  $0.1k + 0.0k = 0.2k$  appears it could be  $0.140 + 0.030 = 0.170$ ). NewtInfo also totals memory used by soups on each store.

### [ More soup details]

Prints information on the Directory and System soups. Also checks for orphans (soups of deleted packages).

### [ List Packages ]

Lists all installed packages (including autoparts) and storage used by each.

### [ Detailed Heap Stats ]

Lists estimated heap memory used by closed installed packages. NewtInfo cannot accurately calculate the heap used by open packages.

### [ List Add-on Prefs/Formulas ]

Lists new or modified entries in your Preferences and Formulas rolls.

### [ List System Notifications ]

Lists any programs that will be notified when the Newton powers down, powers up, or changes a soup. If you have a Newton that won't go to sleep, its insomnia could be caused by a package listed in this section.

### [ List Idlers ]

Lists any idling programs, their frequency and their owners. NewtInfo might not be able to figure out the owner for certain idlers. An unknown idler with a frequency of 2 minutes is most likely the analog clock in the status bar.

### [ List Find-enabled Applications ]

Lists programs that are checked when you perform a "Find All".

## [ List Intelligent Assistant Info ]

Lists built-in and add-on verbs that the Intelligent Assistant understands.

## Technical Information

Remember, if you are running out of memory when generating a report, try building it a few sections at a time. It is possible to build a complete report, but it will take a long time, and requires a large amount of heap memory.

# SleepAid

---

## Overview

SleepAid covers all aspects of power management on your MessagePad. It replaces the default “Sleep” preferences allowing you to set two sleep times - one for battery and one for AC. It lets you reboot or sleep your MessagePad even if some errant application wants it to stay awake. And finally, it adds a SleepAidNow corner for one tap sleep and a HeapStatus corner for an instant reading of free heap space.

## Installation Notes

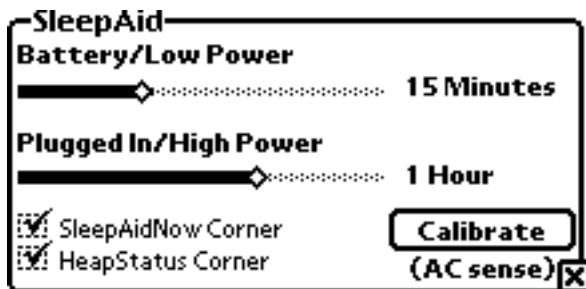
SleepAid will work if installed on a memory card, but we do not recommend it since it will use more heap. If you remove the card SleepAid is installed on, it will deactivate itself.

It’s a good idea to go into the SleepAid prefs right after installing it, because you may not like the defaults. Until you set the prefs, SleepAid will maintain your existing sleep time for both AC and battery power.

## SleepAid Preferences

When SleepAid starts up, it replaces the Newton’s default Sleep preferences. You access the new preferences the same way you accessed the old preferences. The new preferences use sliders instead of a popup menu for setting a sleep time for battery power and AC power (“plugged in”). Once installed,

SleepAid monitors battery status and updates the sleep time accordingly.



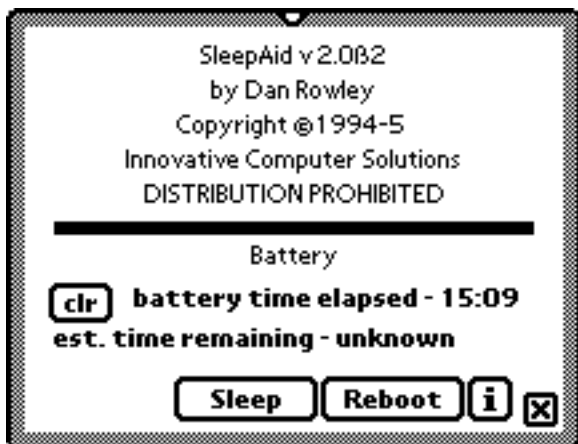
Tap the “Calibrate” button to set the low/high power threshold to the current battery level. This level should appear as “AC sense” if you calibrate when your AC adapter is plugged in.

To activate or deactivate the SleepAidNow or HeapStatus corners, tap the checkboxes by each item. Changes to these settings will take affect when you close the SleepAid preferences

You can tap the SleepAidNow corner (lower-left above the Names button) to instantly launch SleepAid. If you hold your tap for more than one second, the MessagePad will immediately go to sleep. You can tap the HeapStatus corner (lower-right above the Assist button) to have a small window with a current free heap reading. If you hold your tap for more than one second, SleepAid will perform a garbage collection, possibly freeing up more heap space.

SleepAid 1.x users should note the new corner positions!

## Instructions



You can launch the SleepAid application from your Extras drawer or the SleepAidNow corner (see above) to perform additional power management tasks.

The battery gauge displays the current battery power remaining.

The 'battery time elapsed' is a timer that counts every minute the Newton is on and not plugged in. You can reset the timer with the "Clear" button when you change the batteries.

The 'battery time remaining' is a value calculated using the current battery level and the 'battery time elapsed' value. This approximation is not very accurate, and requires that you clear the 'battery time elapsed' timer whenever you change batteries.



Tap on “Reboot” to reset your Newton.

Tap on “Sleep” to put your Newton to sleep.

Tap on “Clear” to reset the battery timer. You need to hit this button every time you replace your batteries or the ‘time remaining’ estimate will not be accurate.

Info - Select “Open Prefs” to open the SleepAid preferences or “Kill Prefs” to remove SleepAid’s soup entry. If you don’t plan on using SleepAid again, use the “Kill Prefs” button before you remove the package from your MessagePad.

## Technical Information

SleepAid makes use of an InstallScript to install the power monitoring routines. If you use a utility that disables this function, SleepAid will not work properly. If you don't want SleepAid to be active, simply remove the package. SleepAid will remember your preferences even when deinstalled, unless you use the "Kill Prefs" option from the application before you remove it.

To conserve battery power, SleepAid only checks the battery status every minute. If you have set an exceptionally short sleep time (under one minute) for battery operation, it's POSSIBLE (but not likely) that SleepAid may not notice if you plug in the Newton in time to prevent it from falling asleep. If this is really a problem, you can tap the screen after plugging your Newton in to keep it awake "a little longer." We should note that we've never actually seen this happen, but it IS theoretically possible (sort of like cold fusion or a balanced federal budget).

The MessagePad 120 is known to sometimes report that it is not plugged in when, in fact, it is. If your MessagePad exhibits this behavior, you may want to have SleepAid trigger on a 100% battery level instead of AC SENSE.

# SoupKitchen

## Overview

SoupKitchen is a full-featured soup browser/editor for the Newton. It was designed for geeks like us who like to dig into the guts of the Newton every now and then. If Newton guts make you squeamish, you should avoid SoupKitchen.

## Warning/Disclaimer

Innovative Computer Solutions assumes no responsibility for whatever damage you do with SoupKitchen. When making changes, you should know what you're doing. Play it safe and make a copy of an important soup before editing it. Be extra careful with the System soup. If you delete or change important entries, you may have to completely reset your Newton and restore from a backup.

## Instructions

Upon launching SoupKitchen, you will be asked to select a soup to edit. Once selected, SoupKitchen will provide information on that soup (number of entries, storage used, index slot, etc.). Tap on the Browse button to enter the soup browser.

While editing, it's important to understand the structure of soups and how SoupKitchen displays their contents. A soup is a linked list of entries. Each entry is a frame. Each frame contains slots. A slot can be an integral value (character, string, integer, real, boolean, symbol, etc.), an array of slots, or another

frame. SoupKitchen displays each frame in its own browser. When you click on a slot in a frame, SoupKitchen will respond in one of two ways. If the slot is an integral value, SoupKitchen will load an editor for that slot (except for binary objects which the current version of SoupKitchen cannot handle). If the slot is an array or another frame, SoupKitchen will open another browser below the current one and display the new frame in it.

## User Interface

From the main screen, there are various buttons to help you navigate through the soup:

At the top of the screen is a button with the name of the current soup. Tap on the button to go back to the soup list.

Below the button is a status indicator that tells you which entry you're browsing, and the total number of entries in the soup. The prev/goto/next buttons let you traverse the entries in the soup.

Each frame of the soup is presented in a browser on an endless roll. You can scroll through the slots in a frame's browser by using the up and down arrows on the right side of the browser. You can resize the height of the browser using the gray box in the lower-right corner of the browser. You can scroll through the endless roll of browsers using the silk-screened/built-in arrows at the bottom of the display.

## Routing

**Remove Soup** removes the soup you're browsing

**Rename Soup** asks you for a new name for the soup

**Copy Soup** lets you make another copy of the soup with a new name

**Copy Soup to <storename>** lets you make a copy of the soup on the named store

**Remove Entry** removes the current entry from the soup

**Remove Slot** removes the selected slot in the last browser.

## Information/Help

**About SoupKitchen** displays credits screen.

**Make dummy soup** creates a soup called “dummysoup” that you can experiment with.

## Technical Info

SoupKitchen supports calls from other programs to open a particular soup (for example, our package management utility, NewtCase, can use SoupKitchen to browse a selected soup). If you would like to support this call in your programs, contact Dan Rowley at dan@newts.com.

SoupKitchen reports that some soups “contains <items> for <package>”. When a program creates a union soup, it provides the Newton OS with a symbol for the soup and two words (one singular, one plural) describing the contents of the soup. SoupKitchen uses this information, which is stored in the info frame of the soup, to display the “contains” message.

# Bugs, Questions, Comments, Suggestions...

If NewtCase crashes, please write down the error code (especially if it is an “Unexpected error”) and e-mail or fax a bug report to us. Please be sure to write down the entire error message, all of the information is important. We also gladly accept suggestions for future versions.

Send e-mail to the author, Dan Rowley, at [dan@newts.com](mailto:dan@newts.com), 73563,2343 on CompuServe or DRowley on eWorld / NewtonMail. You can reach Tom Collins at [tom@newts.com](mailto:tom@newts.com) or 75460,2121 on CompuServe.

Technical Support for NewtCase is available by phone through PelicanWare ([pelican@newts.com](mailto:pelican@newts.com)) at 503/221-1148. Please e-mail bug reports to [bugs@newts.com](mailto:bugs@newts.com), or fax them to 503/221-8709.

You can also get support for our products in the Newton Vendor Forum on CompuServe. Just “GO ICS”.

# Innovative Computer Solutions

ICS was started in 1989 by high school friends Dan Rowley and Tom Collins when they were back in Allentown, Pennsylvania after their freshman years at Arizona State and Penn State (respectively). Things got off to a slow start until Tom transferred to ASU and moved into Dan's tiny apartment in Tempe. Since then, they have both graduated with Computer Science degrees and continued to grow their little company.

Along the way, they've done everything from selling IBM clones (hasn't everyone?) to writing educational software to consulting and tutoring to developing Newton software. They don't know what they'll do in the future, but you can bet that it will include writing Newton software for a few more years.

## ICS on the Internet

Net surfers can check out our official World Wide Web page:

<<http://www.newts.com/>>

ftp directory: <<ftp://ftp.newts.com/pub/>>

and infobot: <<mailto:info@newts.com>>

CompuServe users can check out our section in the Newton Vendor Forum. Just "GO ICS". You can get a free CompuServe membership kit by calling 1-800-524-3388 and asking for representative 595.

We try to keep both sites up to date with information on the latest versions of our freeware, shareware and commercial Newton software. E-mail [tom@newts.com](mailto:tom@newts.com) with comments or questions about our network presence.

**PLEASE READ THIS LICENSE CAREFULLY BEFORE USING THE SOFTWARE. BY USING THE SOFTWARE YOU ARE AGREEING TO BE BOUND BY THE TERMS OF THIS LICENSE. IF YOU DO NOT AGREE TO THE TERMS OF THIS LICENSE, PROMPTLY RETURN THE PRODUCT TO THE PLACE WHERE YOU OBTAINED IT AND YOUR MONEY WILL BE REFUNDED.**

**1. License.** The application, demonstration, system and other software accompanying this License, whether on disk, in read only memory or on any other media (the "Software"), the related documentation and fonts are licensed to you by Innovative Computer Solutions (ICS). ICS owns the media on which the Software and fonts are recorded but ICS and/or ICS's Licensor(s), if any, retain title to the Software, its documentation and fonts. This License allows you to use the Software as a single Newton Product (which, for purposes of this License, shall mean a product bearing Apple's Newton logo), and make one copy of the Software and fonts in a form for backup purposes only. You must reproduce on such copy copyright notice and any other proprietary legends that were on the original copy of the Software and fonts. You may also transfer all your license rights in the Software and fonts, the backup copy of the Software and fonts, the related documentation and a copy of this License to another party, provided the other party reads and agrees to accept the terms and conditions of this License.

**2. Restrictions.** The Software contains copyrighted material, trade secrets and other proprietary material and in order to protect them ICS may not decompile, reverse engineer, disassemble or otherwise reduce the Software to a human-perceivable form. You may not not transmit the Software, rent, lease, loan, distribute, or create derivative works based upon the Software in whole or in part. You may not electronically transmit the Software from one device to another or over a network.

**3. Termination.** This License is effective until terminated. You may terminate this License at any time by destroying the Software and related documentation and fonts. This License will terminate immediately without notice from ICS if you fail to comply with any provision of this License. Upon termination, you must destroy the Software, related documentation, and fonts.

**4. Export Law Assurances.** You agree and certify that neither the Software nor any other technical data received from ICS, nor the direct product thereof, will be exported outside the United States except as authorized and permitted by the laws and regulations of the United States. If the Software has been rightfully obtained by you outside of the United States, you agree that the direct product thereof, except as permitted by the laws and regulations of the United States and the laws and regulations of the jurisdiction in which you obtained the Software.

**5. Government End Users.** If you are acquiring the Software and fonts on behalf of any unit or agency of the United States Government, the following provisions apply. The Government agrees:

(i) If the Software and fonts are supplied to the Department of Defense (DoD), the Software and fonts are classified "Commercial Computer Software" and the Government is acquiring only "restricted rights" in the Software, its documentation and fonts, that term is defined in Clause 252.227-7013(c)(1) of the DFARS; and

(ii) If the Software and fonts are supplied to any unit or agency of the United States Government other than DoD, ICS agrees to waive the Government's rights in the Software, its documentation and fonts in Clause 252.227-19(c)(2) of the FAR, or in the case of NASA, in clause 18-52.227-86(d) of the NASA supplement to the FAR.

**6. Disclaimer of Warranty on Software.** You expressly acknowledge and agree that the Software and fonts is at your sole risk. The Software, related documentation, and fonts are provided "AS IS" and without warranty of any kind and ICS and ICS's Licensor(s), if any, make no representation or warranty, expressed or implied, including but not limited to, the implied warranties of merchantability and fitness for a particular purpose. ICS DOES NOT WARRANT THAT THE FUNCTIONS OF THE SOFTWARE WILL MEET YOUR REQUIREMENTS, OR THAT THE OPERATION OF THE SOFTWARE WILL BE UNINTERRUPTED OR ERROR-FREE, OR THAT THERE WILL BE NO DEFECTS IN THE SOFTWARE AND THE FONTS WILL BE CORRECTED. FURTHERMORE, ICS DOES NOT WARRANT OR MAKE ANY REPRESENTATIONS REGARDING THE USE OF THE RESULTS OF THE USE OF THE SOFTWARE AND FONTS OR THE RESULTS OF THE OPERATION OF THE SOFTWARE IN TERMS OF THEIR CORRECTNESS, ACCURACY, RELIABILITY, OR OTHERWISE. NO ORAL OR WRITTEN



INFORMATION OR ADVICE GIVEN BY ICS OR AN AUTHORIZED REPRESENTATIVE SHALL CREATE AN WARRANTY OR INCREASE THE SCOPE OF THIS WARRANTY. SHOULD THE SOFTWARE PROVE DEFECTIVE, YOU (AND NOT ICS OR AUTHORIZED REPRESENTATIVE) ASSUME THE ENTIRE COST OF ALL NECESSARY SERVICING, REPAIR, OR CORRECTION. SOME JURISDICTIONS DO NOT ALLOW THE EXCLUSION OF IMPLIED WARRANTIES, SO THE ABOVE EXCLUSION MAY NOT APPLY TO YOU.

**7. Limitation of Liability.** UNDER NO CIRCUMSTANCES INCLUDING NEGLIGENCE SHALL ICS BE LIABLE FOR ANY INCIDENTAL, SPECIAL OR CONSEQUENTIAL DAMAGES THAT RESULT FROM THE USE OR INABILITY TO USE THE SOFTWARE OR RELATED DOCUMENTATION, EVEN IF ICS OR AN AUTHORIZED REPRESENTATIVE HAS BEEN ADVISED OF THE POSSIBILITY OF SUCH DAMAGES. SOME JURISDICTIONS DO NOT ALLOW THE LIMITATION OR EXCLUSION OF LIABILITY FOR INCIDENTAL OR CONSEQUENTIAL DAMAGES SO THE ABOVE LIMITATION OR EXCLUSION MAY NOT APPLY TO YOU. In no event shall ICS's liability to you for all damages, losses, and causes of action (whether in contract, tort (including negligence) or otherwise) exceed the amount paid by you for the Software and fonts.

**8. Controlling Law and Severability.** This License shall be governed and construed in accordance with the laws of the United States and the State of Oregon, as applied to agreements entered into and to be performed entirely within Oregon between Oregon residents. If a court of competent jurisdiction finds any provision of the License, or portion thereof, to be unenforceable, that provision shall be enforced to the maximum extent permissible so as to effect the intent of the parties, and the remainder of this License shall continue in full force and effect.

**9. Complete Agreement.** This License constitutes the entire agreement between the parties with respect to the use of the Software, related documentation and fonts, and supersedes all prior or contemporaneous understandings or agreements, written or oral, regarding the subject matter. No amendment to or modification of this License will be binding unless in writing and signed by a duly authorized representative of ICS.

## Special Thanks To...

The many people who have supported us by registering our shareware and buying NewtCase. Without you, NewtCase couldn't have made it this far.

The NewtCase 3.0 beta testers (you know who you are).

PelicanWare for helping us get this thing to market.

David Aikins (AikinsD@aol.com) for creating a beautiful box and manual cover.